

GLI-GFH

EX and non Ex Helideck lighting solutions



Our Ex and non Ex proofed, shock and vibration resistant floodlight has been developed to withstand the harshest offshore environments, while designed to provide safe, powerful illumination with no glare. A 316L grade stainless steel enclosure and high quality internal electronics provide a reliable and long lifetime light source. It is ideally suited for helicopter landing areas and complies with the CAP 437 directive for helicopter deck lighting. Customers may choose between an Ex e connection chamber, Ex e Junction box, flying lead or direct entry. A customized version is available on request.

GLI-GFH

TECHNICAL DESCRIPTION

LIGHT SOURCE

Xenon 35 W

MOUNTING

On bracket with junction box or flying lead.

ELECTRIC

12 and 24 V DC,
110 V AC, 230 V AC, 254 V AC +/- 10%
50/60 Hz.

HOUSING

Stainless Steel 316 L

CABLE ENTRY

Two types: 2 x M20, 2 x M25

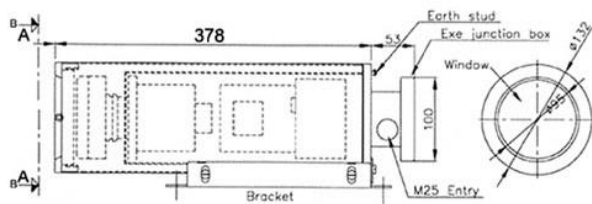
AMBIENT TEMPERATURE

-50°C / +50°C

DIMENSION

Ø 132 L:431

MEASUREMENT DRAWINGS



GLI-GFH